

eX207 Tech-Note

7" HMI, Capacitive Touchscreen, 2 Ethernet Ports, 1 CAN Port JMobile runtime

- 7" TFT color display, LED backlight
- 1024x600 pixels resolution, 16.7M colors
- Capacitive Multitouch
- 64-bit CPU, 1.6 GHz
- 2 Ethernet ports
- CAN Port
- JMobile Studio programming
- CORVINA Remote Connectivity - Option
- CODESYS Control - Option



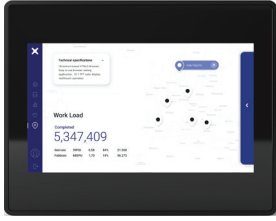
Highlights

The HMIs of eX200 Series combine technical specification, features and performance that make them the ideal choice for edge devices where the requirements of applications in Industry 4.0 are the data control and the visualization.

The pSLC configuration of the flash memory is a great choice for long life applications that will write substantial amount of data over the life of the product. The power of the 64 bit processing platform running Linux and state-of-the-art cybersecurity design make these products great players in modern applications.

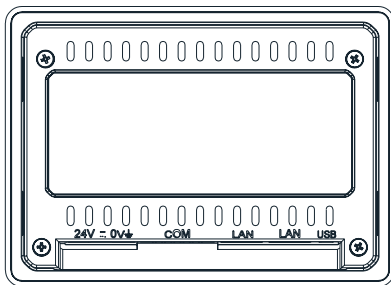
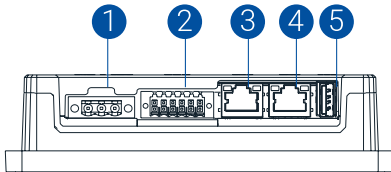
eX200 products, running JMobile software, offer great integration options in enterprise networks and cloud communication. When used in combination with services by CORVINA, remote connectivity and smart data sharing are available for optimal performance in smart factory applications.

eX207 Technical Data

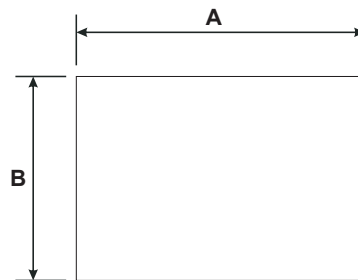
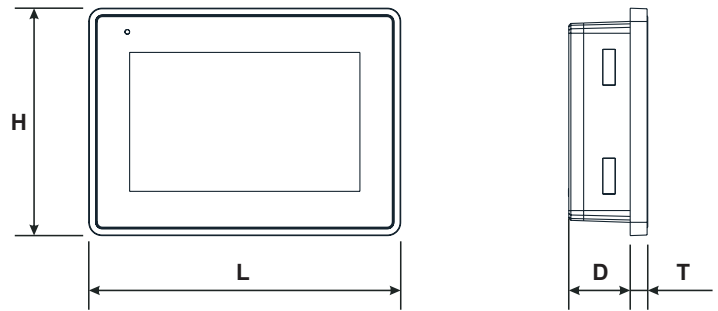


System Resources	
Display - Colors	7" - 16.7M
Resolution	1024x600
Brightness	400 Cd/m ² typ.
Dimming	Yes
Touchscreen	Projected Capacitive - Multitouch
CPU	64-bit RISC quad core - 1.6GHz
Operating System	Linux
Flash	4 GB (pSLC mode - High reliability)
RAM	2 GB
FRAM	64 KB
Real Time Clock	Yes
RTC Back-up	Supercapacitor
Interface	
Ethernet port	2 (10/100 Mbit)
USB port	1 (Host v. 2.0, max. 500 mA)
Serial port	1 (RS-232, RS-485, RS-422, software configurable)
CAN port	1 (Isolated)
Buzzer	Yes
Indicator Light	1 (RGB LED)
Ratings	
Power supply	24 Vdc (9 to 32 Vdc)
Current Consumption	0.4 A max. at 24 Vdc
Input Protection	Electronic
Environment Conditions	
Operating Temperature	-20°C to +55°C (vertical installation)
Storage Temperature	-30°C to +70°C
Operating / Storage Humidity	5-85% RH, non condensing
Protection Class	IP66 (front), IP20 (rear)
Dimensions and Weights	
Faceplate LxH	187x147 mm (7.36x5.79")
Cutout AxB	176x136 mm (6.93x5.35")
Depth D+T	29+8 mm (1.14+0.31")
Weight	0.7 Kg
Approvals	
CE	Electromagnetic Compatibility Directive 2014/30/EU (EMC)
UL*	cULus: UL61010-1 / UL61010-2-201
RCM	Yes

* Roadmap 2024



- 1 Power Supply
- 2 Serial Port/CAN port
- 3 Ethernet Port
- 4 Ethernet Port
- 5 USB port (vers. 2.0-1.1)



Cut-out

Ordering Information

Model	Ordering Code	Part Number	Description
eX207	101006200U-0002-01	+EX207U501	7" HMI, Capacitive Touchscreen, 2 Ethernet Ports, 1 CAN Port, JMobile runtime